



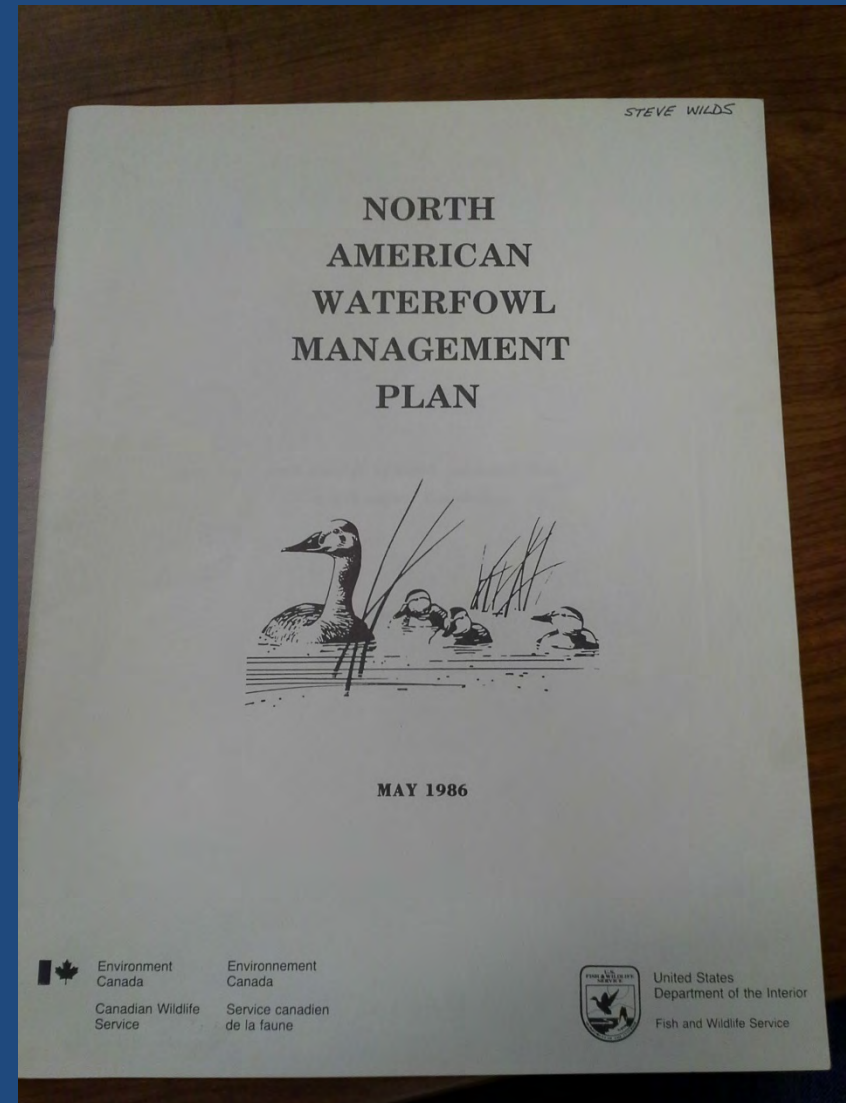
Joint Ventures: Partnerships for All-Bird Conservation

Andy Forbes, JV Coordinator



What is a “Joint Venture”?

- The term originates from the private sector
- NAWMP called for their establishment in 1986.
- Originally eight JVs, centered around key waterfowl geographies.
- USFWS funds administration of JV partnerships



All-Bird Evolution

- National strategies developed for waterbirds, shorebirds, and landbirds.
- Rather than build new JVs, focus was expanded to include conservation of priority species from all guilds.



JV Structure

- JVs are partnerships of organizations interested in bird conservation at regional scale
- Administered by Mgmt. Board
- Provide assistance in coordination, planning, implementation, outreach, and research/monitoring



Upper Miss JV - Background

- Established in 1993
- JV Management Board members from 10 states, federal agencies, NGOs
- Four JV staff
 - Bloomington, MN (2)
 - East Lansing, MI (2)



Upper Miss JV Management Board

- State Agencies (10)

- Iowa
- Illinois
- Indiana
- Michigan
- Ohio
- Minnesota
- Missouri
- Nebraska
- Wisconsin
- Kansas

- Federal Agencies (6)

- Bureau of Indian Affairs
- Environmental Prot. Agency
- U.S. Forest Service
- Natural Resources Cons. Serv.
- U.S. Fish and Wildlife Service
- National Park Service

- NGOS (5)

- Pheasants Forever
- Ducks Unlimited
- The Nature Conservancy
- National Audubon Society
- American Bird Conservancy

What We Do

- Assist with development, preparation, and review of NAWCA proposals and other projects
- Work with partners to identify shared research/monitoring and protection/restoration priorities and objectives, track accomplishments
- Administer GLRI-JV and JV Science grant programs
- Develop decision support tools for partnership

GLRI-JV Grants

- Watershed of Great Lakes
- RFP expected in fall
- Up to \$300k for habitat protection/restoration/enhancement
- Must be matched with 25% non-federal funds



Committees of the UMRGL Region Joint Venture Science Team (December 2017)

JV Science Team

Greg Soulliere, Chair

Bird-group Committees

(Ad Hoc committees: Technical guidance through species and modeling expertise for JV conservation planning and evaluation)

Waterfowl

John Coluccy, Co-Chair (DU)
Jcoluccy@ducks.org

Greg Soulliere, Co-Chair (FWS-JV)
Greg_Soulliere@fws.gov

Mike Eichholz (SIU)
Eichholz@siu.edu

Robert Gates (OSU)
Gates.77@osu.edu

Heath Hagy (FWS-MB)
HHagy@illinois.edu

Dave Luukkonen (MI DNR)
Luukkonend@michigan.gov

John Simpson (WPMC)
John@Winous.org

Jake Straub (UW-SP)
Jacob.Straub@uwsp.edu

Mitch Weegman (UMO)
Weegmanm@missouri.edu

Waterbird

Mike Monfils, Co-Chair (MI NFI)
Monfilms@michigan.gov

Rachael Pierce, Co-Chair (FWS-MB)
Rachael_Pierce@fws.gov

Dan Holm, Co-chair (IL DNR)
Dan.Holm@illinois.gov

Brian Loges (FWS-NWR)
Brian_Loges@fws.gov

Frank Nelson (MO DOC)
Frank.nelson@mdc.mo.gov

Nat Miller (Audubon)
Nmiller@audubon.org

Rich Schultheis (KS PWT)
Richard.Schultheis@ksoutdoors.com

Brendan Shirkey (WPMC)
Brendan@winous.org

Anna Sidie-Slettedahl (FWS-JV)
Anna_Sidie-Slettedahl@fws.gov

Greg Soulliere (FWS-JV)
Greg_Soulliere@fws.gov

Chris Tonra (OSU)
Tonra.1@osu.edu

Linda Wires (USFWS-IWMM)
Linda_Wires@fws.gov

Shorebird

Vacant, Co-Chair

Vacant, Co-Chair

Mohammed Al Saffar (FWS-JV)
Mohammed_AlSaffar@fws.gov

Andy Forbes (FWS-JV)
Andrew_Forbes@fws.gov

Robert Gates (OSU)
Gates.77@osu.edu

Ben O'Neal (Franklin College)
BOneal@franklincollege.edu

Brad Potter (USFWS-LCC)
Bradly_Potter@fws.gov

Greg Soulliere (FWS-JV)
Greg_Soulliere@fws.gov

Landbird

David Ewert, Co-Chair (TNC)
dewert@tnc.org

Tom Will, Co-Chair (FWS-MB)
tom_will@fws.gov

Erin Giese (UW-Green Bay)
giesee@UWGB.edu

Allisyn-Marie Gillet (IN DNR)
agillet@dnr.in.gov

Shawn Graff (ABC)
sgraff@abcbirds.org

Katie Koch (FWS-MB)
katie_koch@fws.gov

Mark Nelson (USFS)
mdnelson@fs.fed.us

Brad Potter (FWS-LCC)
bradly_potter@fws.gov

Greg Soulliere (FWS-JV)
greg_soulliere@fws.gov

Chris Tonra (OSU)
tonra.1@osu.edu

Mike Ward (IL NHS)
mpward@illinois.edu

Wayne Thogmartin (USGS)
wthogmartin@usgs.gov

Kelly VanBeek (FWS-MB)
kelly_vanbeek@fws.gov

Technical Committee

(Standing committee:
Technical guidance through
science-evaluation proposal
reviews and recommendations
for JV financial support)

Greg Soulliere, Chair (FWS-JV)

John Coluccy (DU)

Mike Eichholz (SIU)

David Ewert (TNC)

Robert Gates (OSU)

Dave Luukkonen (MI DNR)

Frank Nelson (MO DOC)

Mark Nelson (USFS)

Rich Schultheis (KS PWT)

Jake Straub (UW-SP)

Wayne Thogmartin (USGS)

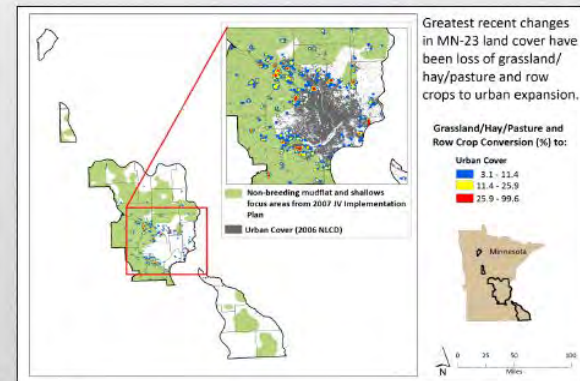
State X BCR Assessments

- Completed in 2014
- Provide stepped down lists of JV focal species, assessments of land cover changes, population and habitat objectives, and management implications at a more local scale



Minnesota BCR 23 – Assessment Summary

Bird conservation Joint Ventures (JVs) were established to help achieve continental bird population goals by designing and managing landscapes with high value to birds at regional, state, and local scales. JVs develop Implementation Plans where "focal species" are used to represent guilds and biological models are employed to translate population objectives into habitat objectives. This summary includes highlights from a JV assessment of bird habitat objectives and land use trends in the Minnesota BCR 23 (MN-23) "State x Bird Conservation Region." Objectives in the 2007 JV Implementation Plan were developed using spatial data from 2001, and JV partners have reported significant conservation accomplishments since objectives were established. However, trends in landscape cover types suggest mixed results in maintaining and increasing those land covers associated with key bird habitats. We provide general landscape trends based on the National Land Cover Database (2001 to 2006), comparisons between JV bird habitat objectives and cover type availability, and broad implications of those land-cover trends to bird habitat conservation. Please see the complete MN-23 assessment for more details.



Primary cover-types

MN-23 consists of a near-equal mixture of row crops (27%), grassland/hay/pasture (26%), and upland forest (22%). Urban land (+41,000 ac) expanded in recent years, whereas total area of row crop (-21,000 ac), grassland/hay/pasture (-18,000 ac), and upland forest (-9,000 ac) declined. Cover types that remained relatively stable were shrub/scrub and emergent marsh wetlands.

JV Implementation Plans

2007 Implementation Plan



Landbird Habitat Conservation Strategy



Shorebird Habitat Conservation Strategy



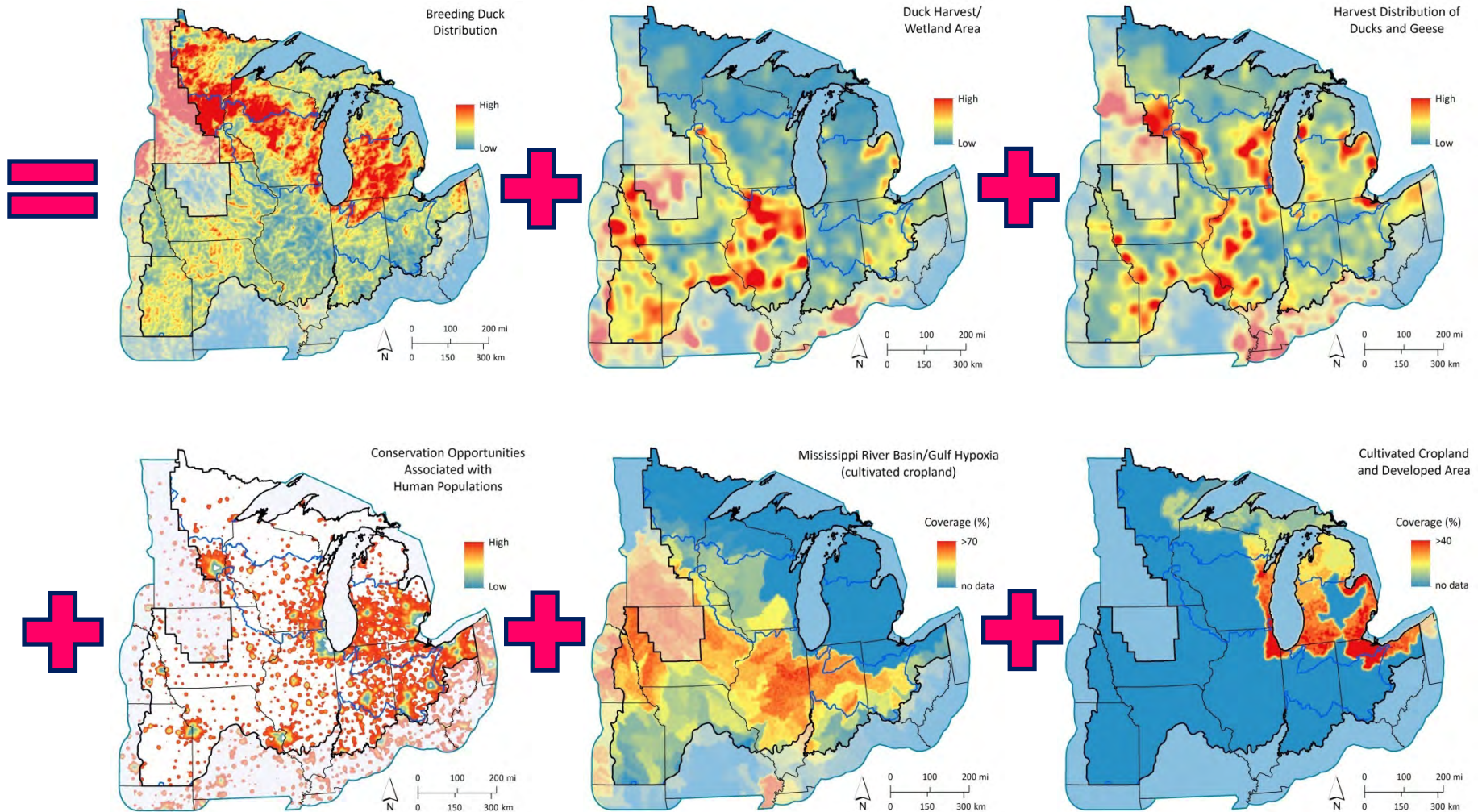
Waterfowl Habitat Conservation Strategy



Waterbird Habitat Conservation Strategy

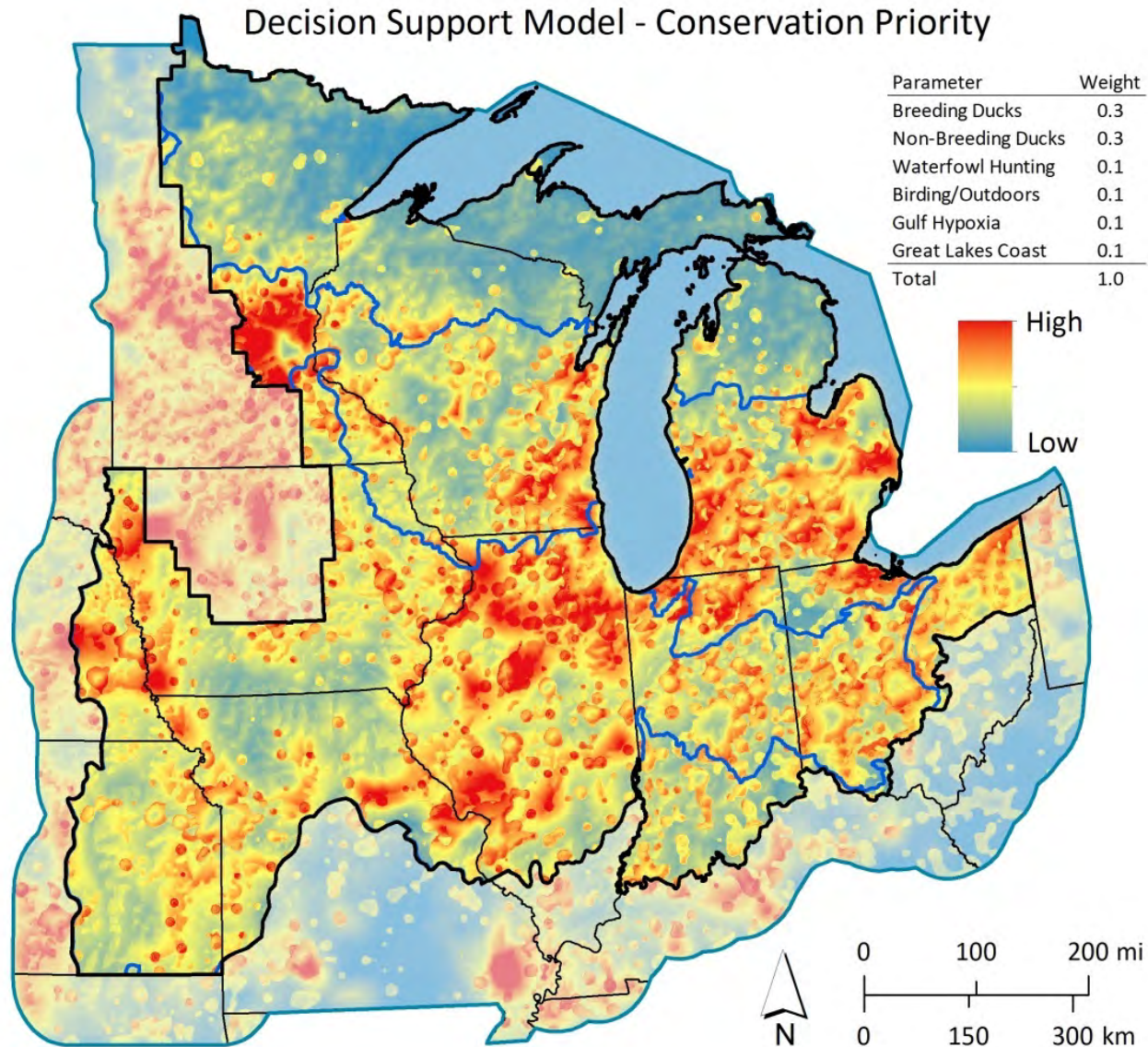


Habitat Decision Support Models



- Six objectives representing biological and social issues
- Different weights assigned to each objective (represented spatially in maps)
- Weighted objectives summed to produce decision support model (composite map)

Habitat Decision Support Models

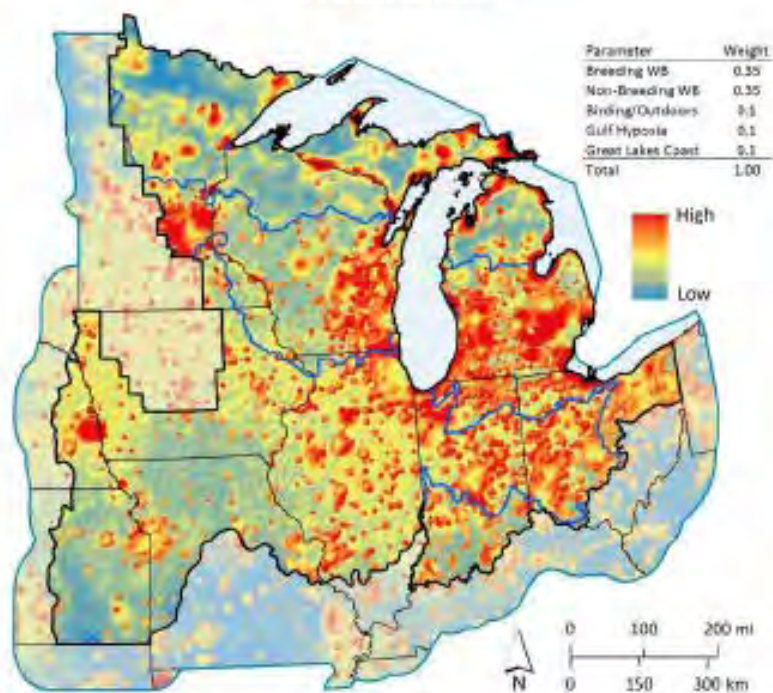


Mixed Model: Biological & Social Values

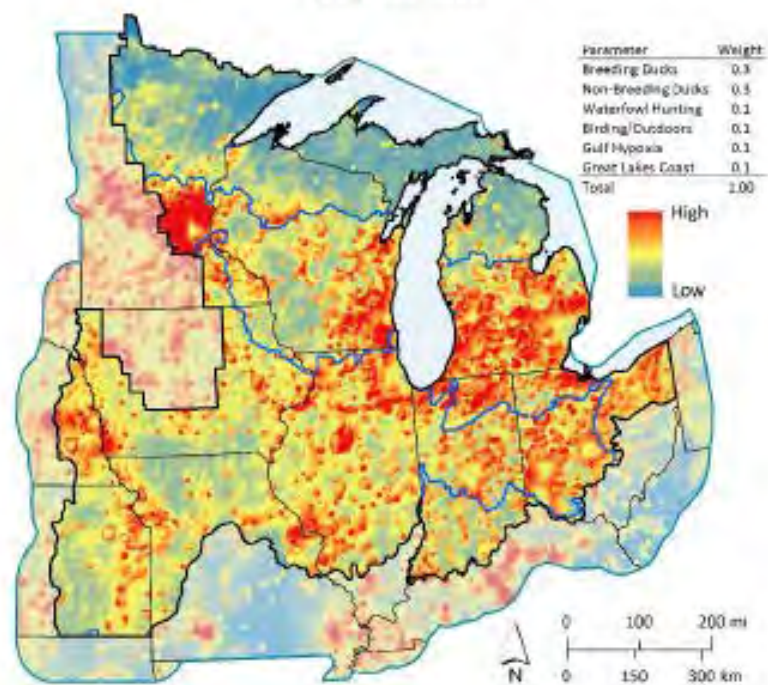
Decision Support Tool

Mixed-Model

Waterbirds



Waterfowl



Priority Bird Species- Landbirds



- Breeding
 - Kirtland's Warbler (99%)
 - Golden-winged Warbler (75%)
 - Henslow's Sparrow (53%)
 - Red-headed Woodpecker (29%)
 - Black-billed Cuckoo (23%)
- Nonbreeding
 - Short-eared Owl – 24%
 - Northern Shrike – 20%
 - Rusty Blackbird – 16%

What's Next for the JV?

- Working with JV Management Board and conservation partners to step down Waterfowl and Waterbird HCS (Wisconsin, Ohio)
- Using HCSes to inform decision making process for grant ranking, etc.
- Thinking ahead to updating JV decision support tools/strategies for landbirds.....

The Latest with Landbirds....

- JV Board discussion, fall 2017 meeting
- JV Landbird Committee met in January 2018 to discuss possible options, focal areas
 - Forest birds, Grassland birds, and possibly migration/nonbreeding issues (airspace?)
- Next steps are to reach out to conservation community and find out what needs are, develop tools based upon feedback and Board input

What's Next?

